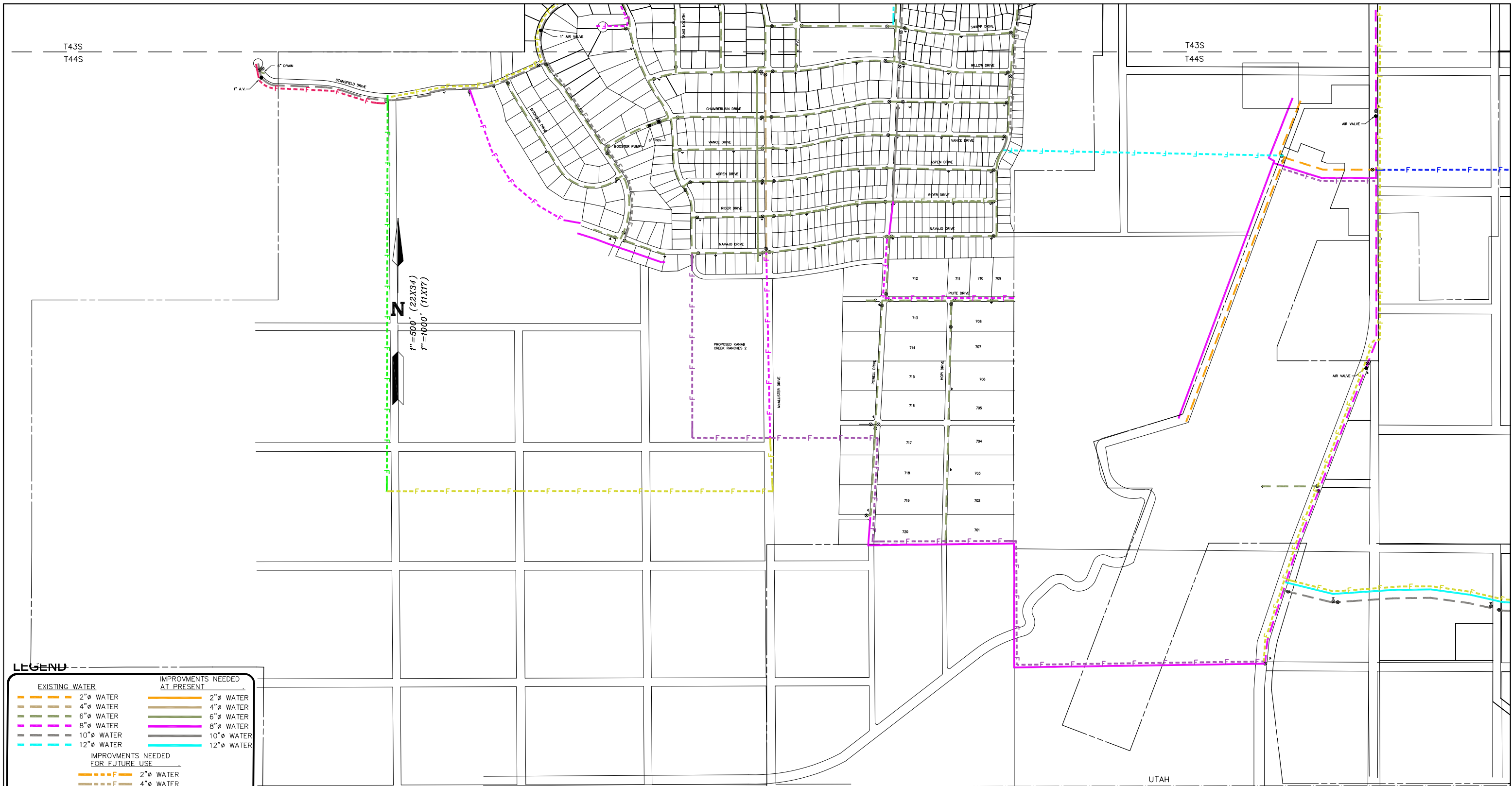


S:\sds\kpr\01-21\WATER EXHIBIT.dwg SHEET 4, 7/17/2006 1:15:52 PM.  
gwilliams



**LEGEND**

EXISTING WATER		IMPROVMENTS NEEDED AT PRESENT	
—	2" Ø WATER	—	2" Ø WATER
—	4" Ø WATER	—	4" Ø WATER
—	6" Ø WATER	—	6" Ø WATER
—	8" Ø WATER	—	8" Ø WATER
—	10" Ø WATER	—	10" Ø WATER
—	12" Ø WATER	—	12" Ø WATER
IMPROVMENTS NEEDED FOR FUTURE USE			
- - -	2" WATER	- - -	2" WATER
- - -	4" WATER	- - -	4" WATER
- - -	6" WATER	- - -	6" WATER
- - -	8" WATER	- - -	8" WATER
- - -	10" WATER	- - -	10" WATER
- - -	12" WATER	- - -	12" WATER
- - -	14" WATER	- - -	14" WATER
- - -	16" WATER	- - -	16" WATER
- - -	20" WATER	- - -	20" WATER
- - -	24" WATER	- - -	24" WATER
- - -	30" WATER	- - -	30" WATER

UTAH  
ARIZONA

<p>148 EAST TABERNAACLE, ST. GEORGE, UT 84770 TEL: 435-628-6500 FAX: 435-628-6553</p>	<p>KANAB CITY CAPITAL FACILITIES PLAN</p>
	<p>SHEET 4 CULINARY WATER</p>